

## LC-MS/MS    GC-MS/MS

		PSA		LC-MS/MS	GC-MS/MS
	LOD	1 µg/kg		LOQ	2 µg/kg
1	500~1000g				
2	5g		20uL	5mL	20mL    50mL
		20min	10min	1g	5g
	8000rpm	5min			
3		3mL	0.15g	0.15g PSA,	5min
	10000rpm	5min			
4	LC-MS/MS				
	1mL	35		1mL 50%	/
5	GC-MS/MS				
	1mL	35		1mL 30%	/
	3000rpm	5min			
1	LCMS-8060				
	C18	100 mm x 2.1 mm		1.7 µm	
	0.3 mL/min				
	40				
	2 µL				

A 4 mmol/L B

1

1

(min)	A (%)	B (%)
0.01	70	30
5.0	10	90
6.5	10	90
7.0	70	30
10.0	70	30

ESI-

4.5 kV

3.0 L/min

10 L/min

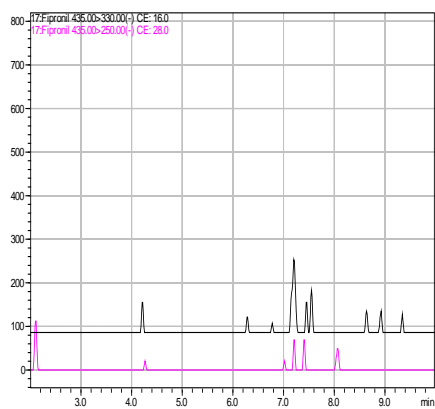
10 L/min

250

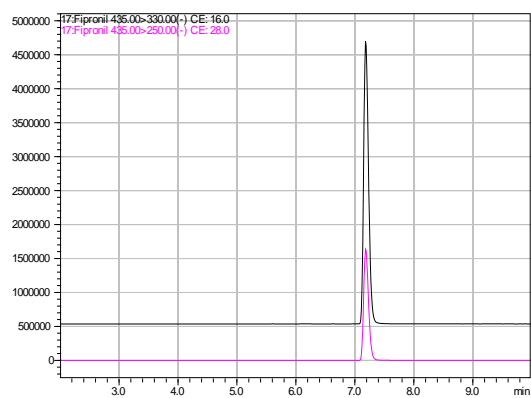
350

250

MRM 435>330(16eV) 435>250(28eV)



LC-MS/MS



LC-MS/MS

2 GCMS-TQ8040

Rxi-5MS 30m×0.25mm×0.25um

260

50 1 min 20 /min 125 0 min

10 /min 290 5min

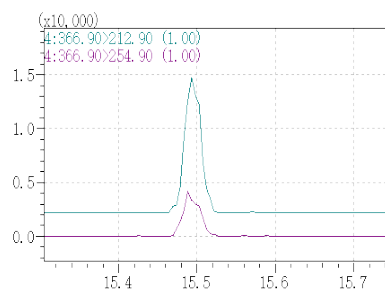
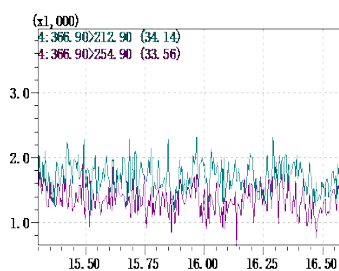
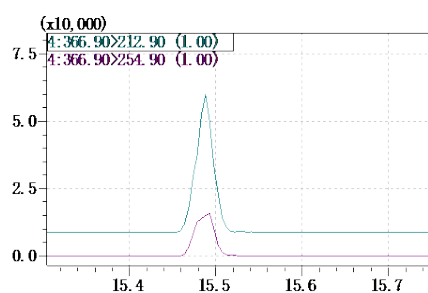
280

80psi

200

5 min

MRM 367>213(30eV) 367>255(22eV)



1 µg/kg

2 µg/kg

2-200 µg/kg

70-120%